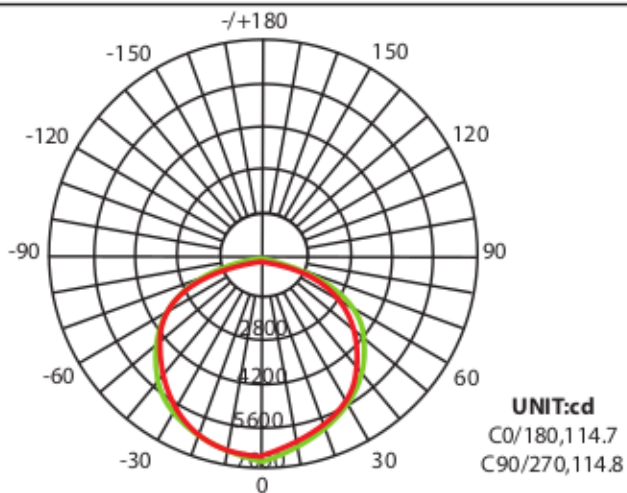


DAMAR®

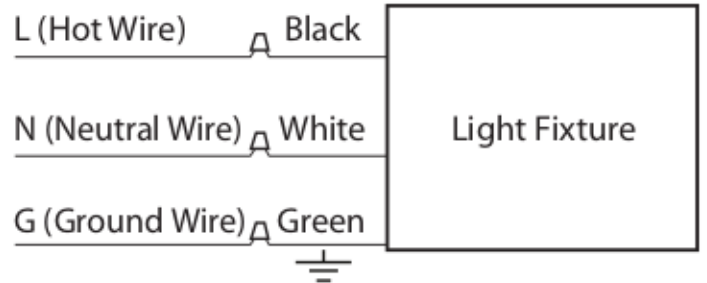
LED GAS STATION 150W/4K



PHOTOMETRICS



WIRING DETAILS



34081A LED GAS STATION
150W/4K

Insert
Safety
Symbols
Here

Wattage: 150W
CCT: 4000K
CRI: 70
Avg Hours: 50,000
Avg Lumens: 18000
Voltage: 120-277V
Hertz: 50/60Hz

DAMAR®

805 N Carnation
Aurora, MO 65605
Made in China

Installation Instructions GAS STATION CANOPY

! WARNING

To reduce the risk of electrical shock, fire, or injury to persons; read and follow all warnings and installation instructions before installing. All installation should be performed by a qualified electrician.

RISK OF ELECTRIC SHOCK

Ensure power is off before installation or inspection. All wirings are performed in accordance with Electrical Code and local electric code.

RISK OF FIRE

Fixtures are rated for use in 120-277, 50/60 HZ protected circuit and 90 C rated supply wire.

FOR YOUR SAFETY

While performing installation described, gloves, safety glasses or goggles should be worn.

Para reducir el riesgo de descarga electrica, incendio o lesiones a personas, lea y siga todas las advertencias e instrucciones de instalacion antes de realizarla. Toda instalacion debe ser efectuada por un electricista cualificado.

RIESGO DE DESCARGA ELECTRICIA

Asegurese de desconectar la corriente antes de la instalacion o inspeccion. Todos los cableados se realizan de acuerdo con el Codigo Electrico y el codigo electric local.

RIESGO DE INCENDIO

Las luminarias estan clasificadas para su uso con 120-277 V, circuitos protegidos de 50-60 Hz y cables adecuados para 90 C.

PARA DE INCENDIO

Mientras realice las instalaciones descritas, se recomienda el uso de guantes y gafas de seguridad.

This product must be installed in accordance with the National Electric Code (NEC) and all applicable federal, state, and local electric codes and safety standards.

Disconnect product and allow cooling prior to servicing.

Any alterations or modification of this product is expressly forbidden as it may cause serious injury, death, property damage and/or product malfunction.

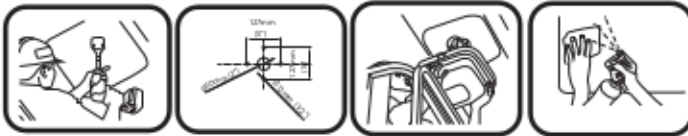
This luminaire is designed to operate in ambient temperatures ranging from -30 C to 55 C and to be horizontally mounted with the LEDS facing down.

Estes producto debe instalarse de acuerdo con el Codigo Electrico Nacional (NEC) y todas las leyes federales, estatales y locales de los codigos electricos y normas de seguridad.

Desconecte el producto y permitir el enfriamiento antes de darle servicio. Cualquier alteracion o modificacion de este producto esta prohibido expresamente, ya que puede causar graves lesiones personales, muerte, danos, a la propiedad y/ o mal funcionamiento del producto.

Esta Luminaria esta disenado para funcionar en temperaturas ambiente comprendidas entre -30 C a 55 c par ser montado horizontal mente con los LEDS hacia abajo

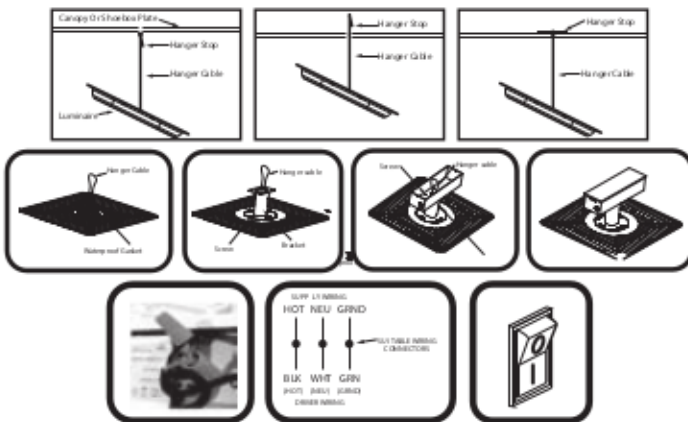
Preparation



New: Drill one hole (2 inches in diameter) in canopy at desired center of light and four holes (1/2 inch in diameter) with metal hole saw. (see diagram for details)

Replacement: Disconnect wire from the old fixture and remove fixture canopy. Clean surface with a cloth and cleaning agent.

Installation



Step 1: Fix the fixture with hanger cable (screw- driver/ metal rod) as a pendant.

Step 2: Place water proof gasket below the bracket lined up correctly over 4 MB holes, back of the luminaire, fixed by 4 pc M8 screws.

Step 3: Install the gasket to the bottom of the driver box and top of the bracket secured by 4 pcs M4 screws.

Step 4: Route luminaire input DC to the DC (Red to Red/ Black to Black) output of the power supply, then AC to AC. Turn on system, energize main circuit breaker. Confirm proper luminaire operation.



www.damarww.com

34081A LED GAS STATION

Wattage : 150W
CCT: 4000K
CRI : 70
Avg Lumens : 18000
Voltage: 120-277V
Hertz: 50/60Hz

Manufactured in China for
DAMAR®
805 N Carnation
Aurora, MO 65605