

**DAMAR®****LED T-BAY 2FT****WARNING**

- To reduce the risk of electrical shock, fire, or injury to person; all installation should be performed by a qualified electrician.
- Ensure power is off before installation or inspection. All wiring must be performed in accordance with National Electrical Code (NEC) and local electrical code.
- Fixtures are rated for use in 120-277V, 50/60HZ protected circuit and 194°F rated supply wire
- Wear gloves, safety glasses or goggles while performing installation.
- Do not make or alter any open holes in an enclosure of wiring or electrical components during kit installation.
- To prevent wiring damage or abrasion, do not expose wiring to edge of sheet metal or sharp objects.
- Do not alter, relocate, or remove wiring, lampholders, power supply, or any other electrical components.

**INSTALLATION**

## Suspended Mounted

## HARDWARE:



AA: Hanging Chain (2) BB: "V" Hook (2) CC: Wire Nuts (3)

**1. ATTACH THE CEILING HOOKS**

Choose desired location of light fixture making sure it is within reach of an outlet. Use a pencil to place a mark on the ceiling where each ceiling hook (Part DD not included) should go. Screw hooks in place until secure.

**2. SUSPENDED TO CEILING**

- 2.1. Hook on the "V" hook (Part BB) across each hanging chain (Part AA). (Figure 2)
- 2.2. Hook on the "V" hook (Part BB) across each holes on both sides of the fixture. (Figure 1)
- 2.3. Hook on the hanging chains (Part AA) across each ceiling hooks (Part DD not included). (Figure 1)

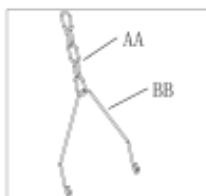


(Figure 1)

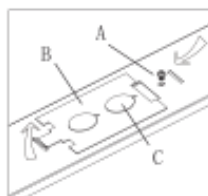
**3. WIRING CONNECTION**

**WARNING:** Turn off the power at fuse or circuit box.

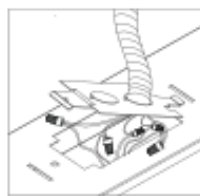
- 3.1. Loosen the screw (Part A) by using the phillips screwdriver on the back of the fixture. (Figure 3)
- 3.2. Remove the access plate (Part B) and KNOCKOUT a hole (Part C). (Figure 3)
- 3.3. Make wire connections in accordance with local codes by using wire nuts (CC) to secure wiring connection. (Figure 4)
- 3.4. Replace the access plate (Part B) and tighten the screw (Part A). (Figure 5)
- 3.5. Turn on the power at fuse or circuit box.



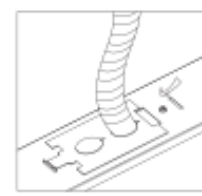
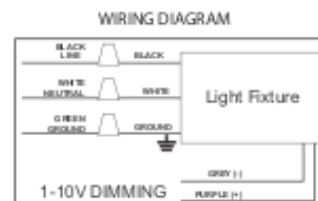
(Figure 2)



(Figure 3)



(Figure 4)



(Figure 5)

**DAMAR®**

805 N Carnation  
Aurora, MO 65605  
Made in China