



# App User Manual

---

<b>1. Downloading the App.....</b>	<b>3</b>
<b>2. Registration/Login/Password Retrieval.....</b>	<b>4</b>
● Registration.....	4
<b>3. Family/Member Management.....</b>	<b>8</b>
<b>4. Add Device.....</b>	<b>10</b>
● Add Device -- EZ Mode.....	11
● Add Device -- AP Mode.....	12
● Add Device -- Enter WIFI Password.....	13
● Add Device -- Network Configuration Process.....	14
● Add Device -- Addition failed.....	17
<b>5. Device Control.....</b>	<b>18</b>
● Device Control -- Single Device Control.....	18
● Device Control -- Device Share.....	21
● Device Control -- Group Control.....	22
<b>6. Smart-Automatic.....</b>	<b>24</b>
● Smart-Automatic.....	24
● Smart-Scene.....	25
● Smart-Add/change/delete.....	26
<b>7. My Family.....</b>	<b>28</b>
<b>8. Profile Page.....</b>	<b>29</b>

Search and download “Tuya Smart” in major application markets or scan the QR code below to download the App.

---

## 1. Downloading the App

Search and download “Tuya Smart” in major application markets or scan the QR code below to download the APP.



## 2. Registration/Login/Password Retrieval

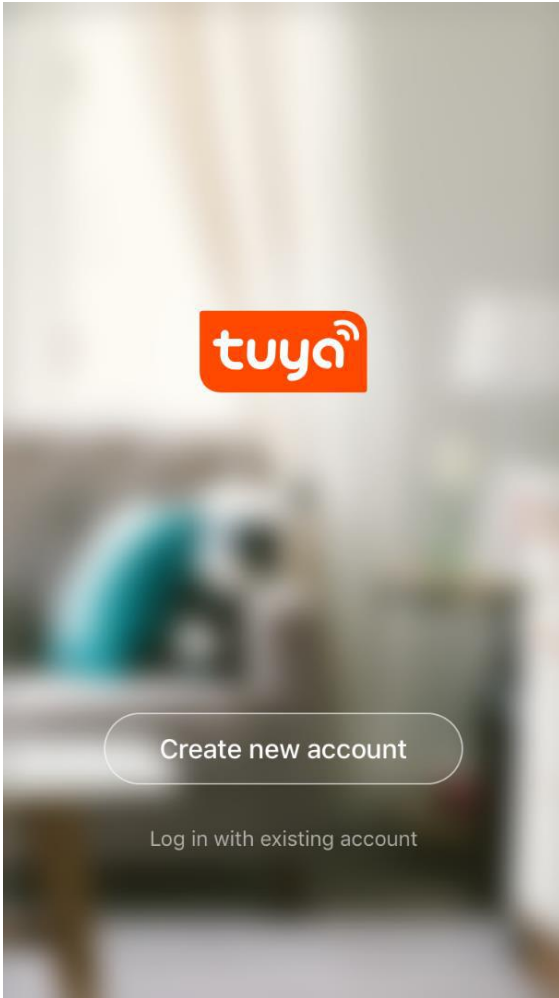


Figure 1

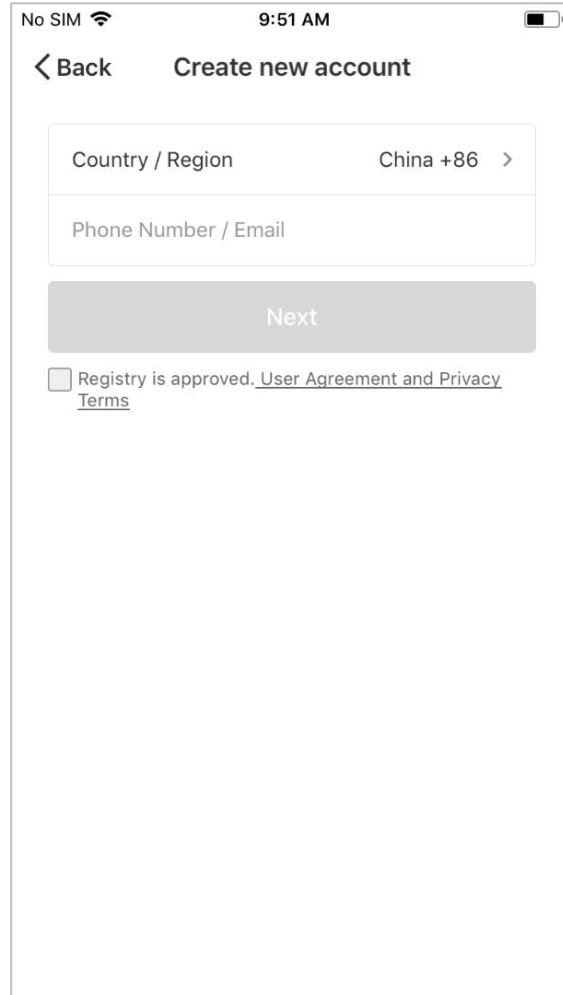


Figure 2

### ● Registration

If you do not have an App account, you can choose to register an account or log in with a text message verification code. The registration process will be described on this page and the following page.

1. Click "Create new account" to display the registration page as shown in Figure 1.
2. The system will automatically detect the country/region you are in, or you can manually select the country/region, then enter your mobile phone number or email address and click "Next" as shown in Figure 2.

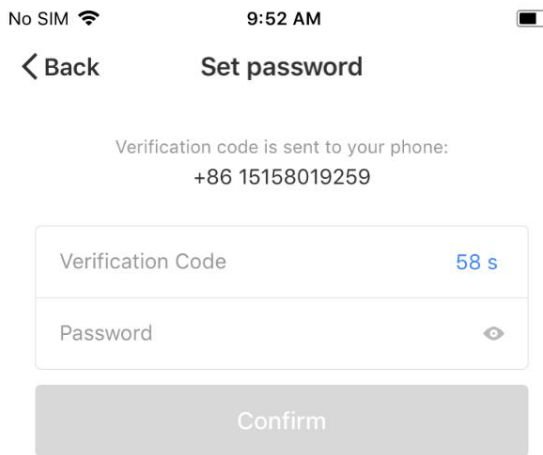


Figure 3

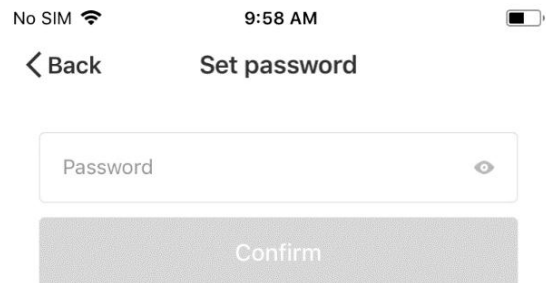


Figure 4

3. If you entered your mobile phone number, please enter the verification code you received via your mobile phone and a password on the page shown in Figure 3 and click “Confirm” to successfully complete the registration.

4. If you entered your email address, please enter your password on the page shown in Figure 4 and click “Confirm” to successfully complete the registration.



### Account and Password Login

If you already have an app account, click “Log in with existing account” to display the login page.

1. The system will automatically detect the country/region you are in, or you can manually select the country/region.

2. Enter your mobile phone number or email address and your password to log in to the system.

### Login via a third-party social-media account

If you have Wechat or QQ installed on your mobile phone, click Wechat icon or QQ icon in the social-media account login area. After passing the authorization page, you will be logged in to the system.



Figure 1

## Mobile Phone Number and Verification Code Login

1. Click “verification code login” in Figure 1 and a new page will be displayed.

2. The system will automatically detect the country/region you are in, or you can manually select the country/region.

3. Enter your mobile phone number and click “Obtain Verification code” button and you will receive a text message with the verification code. Enter the verification code and click “Login” button to log in as shown in Figure 2.

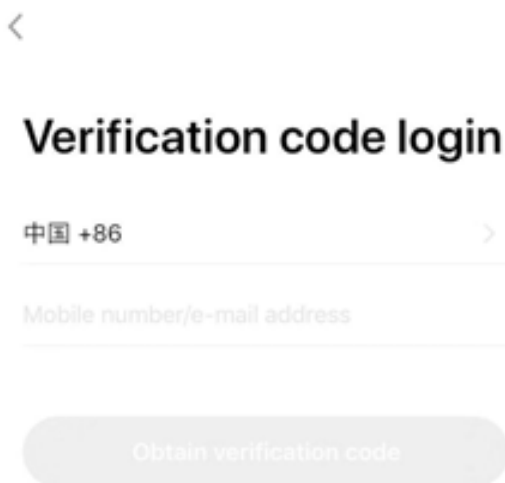


Figure 2

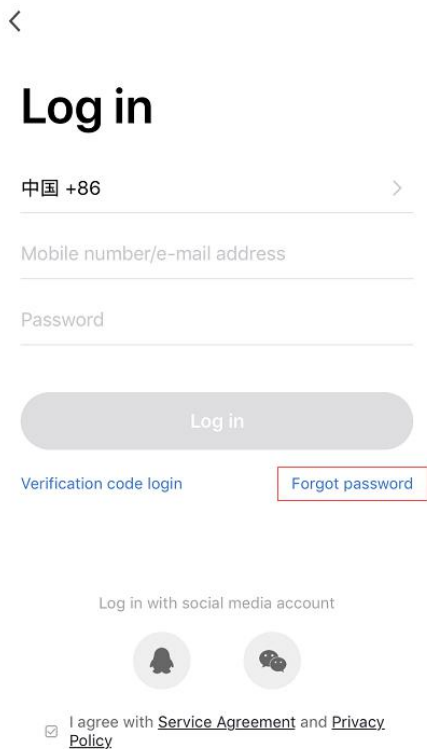


Figure 1



Figure 2

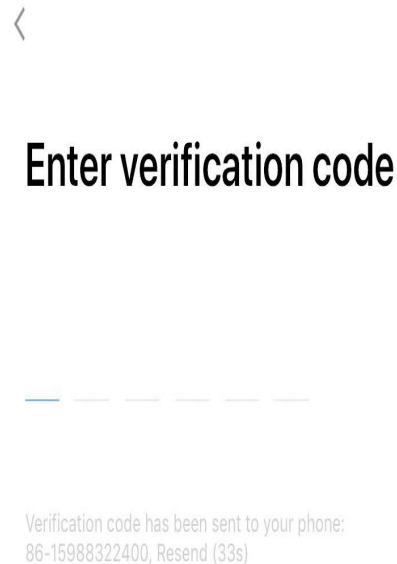


Figure 3

## Set Password

Password must contain 6-20 characters, including alphabets and numbers



Figure 4

### ***Forgotten password***

If you forget your app account password, you can reset your password through the password retrieval process.

1. Click “Forgot Password”, as shown in Figure 1.
2. The system will automatically detect the country/region you are in, or you can manually select the country/region, then enter your mobile phone number or email address and click “Next”, as shown in Figure 2.
3. Please enter the verification code you received via text message or email in the page shown in Figure 3.
4. Set the new Password, then click “Completed”, as shown in Figure 4.

## 3. Family/Member Management

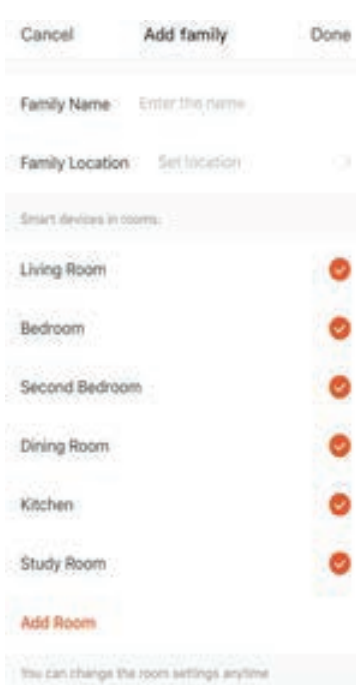


Figure 1



Figure 2

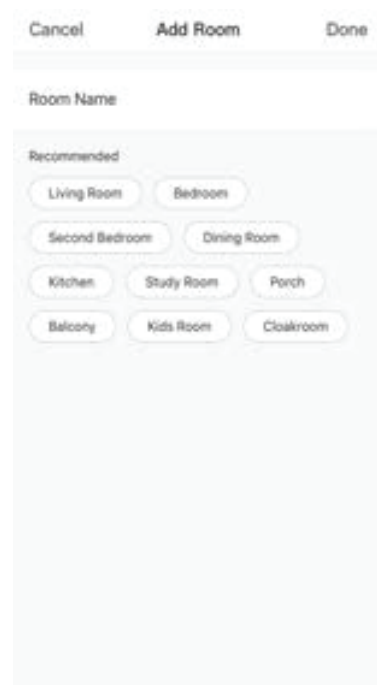


Figure 3

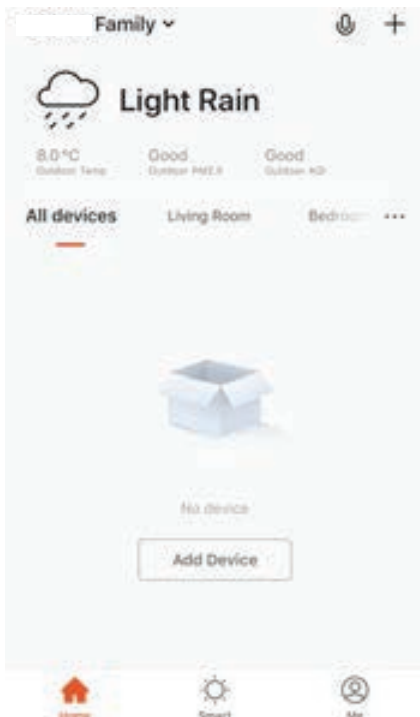


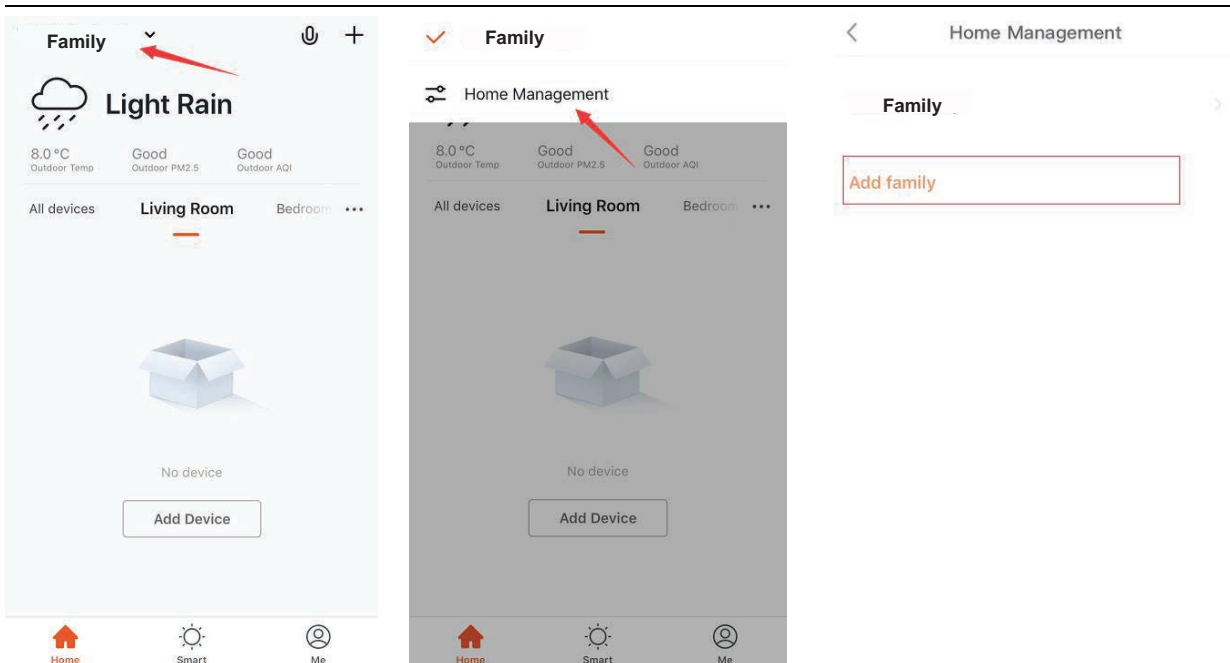
Figure 4

1. After logging in, click “Start Your Smart Life”, and the “Add families” page will be displayed, as shown in Figure 1.

2. Enter Home Name and click “Set Location” a map page will display. Move the family icon to your location to change it, then click “Confirm”, as shown in Figure 2.

3. Click “Add other rooms” to add rooms, as shown in Figure 3. Click “Completed” in the upper right corner to complete the room settings. You can also click the button on the “My family” page to change your room settings at any time, as shown in Figure 4.

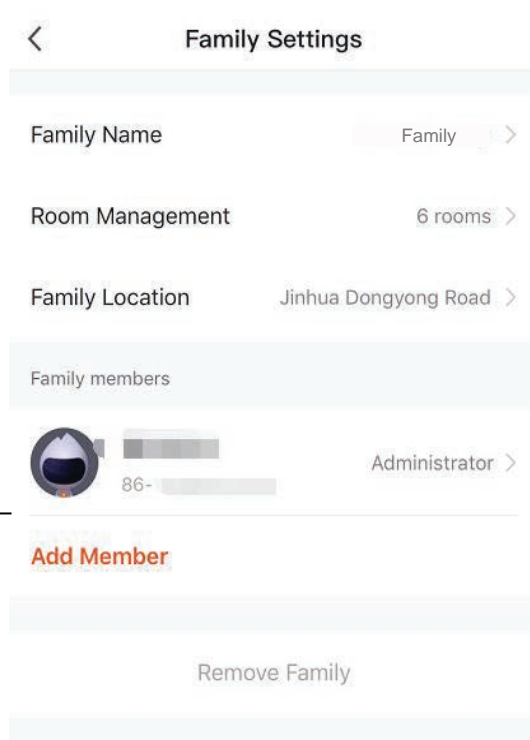




You can add and manage families by clicking the pull-down triangle in the upper left corner of the “My family” page.

The user can control devices for multiple families from one account. Simply select the family whose devices you wish to operate from the Select Family Menu.

Click “ Family ” to display the Family Setting page, as shown below:

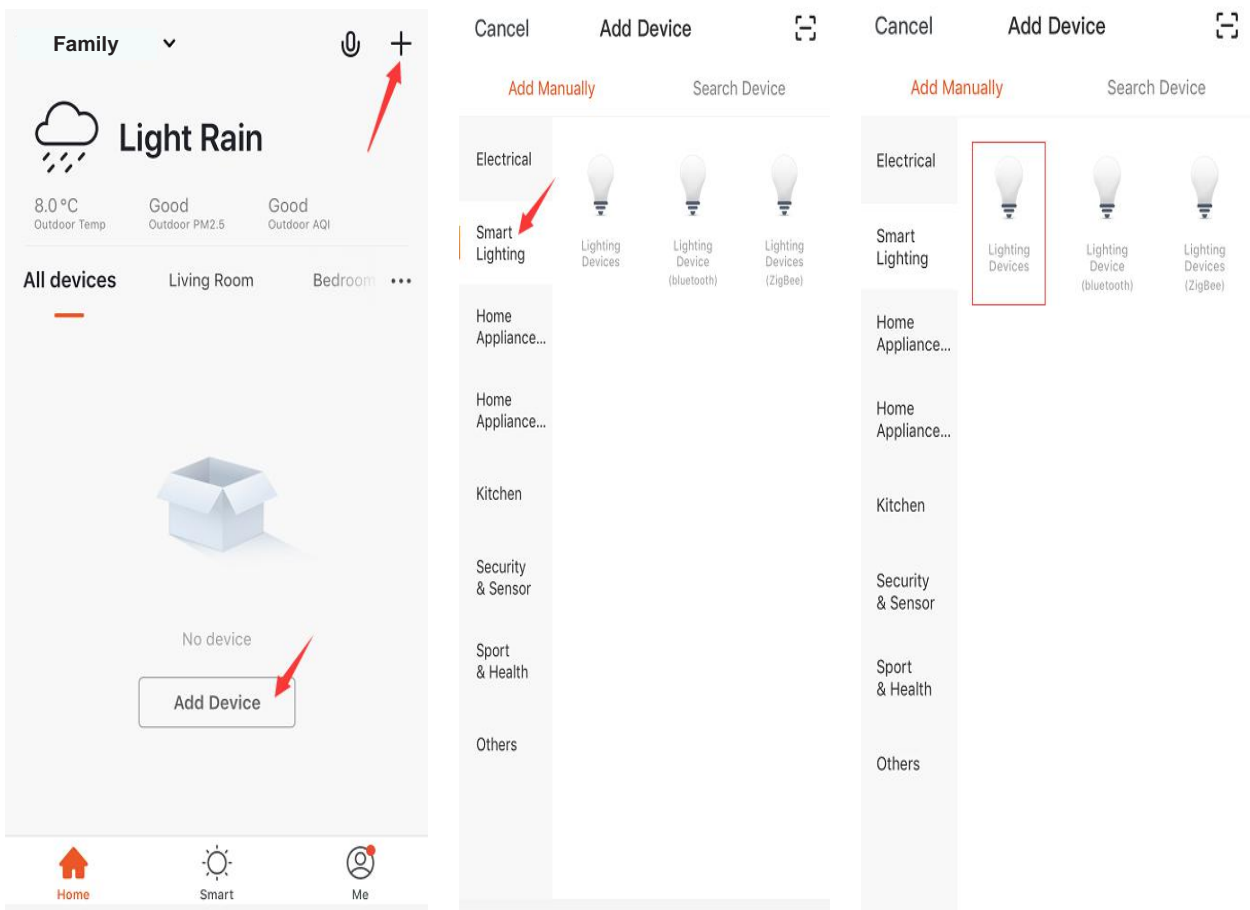


Add or delete a home’s rooms, centralize management of devices in each room.

Other family members can control smart devices in the house but cannot change, add or delete home settings. members.

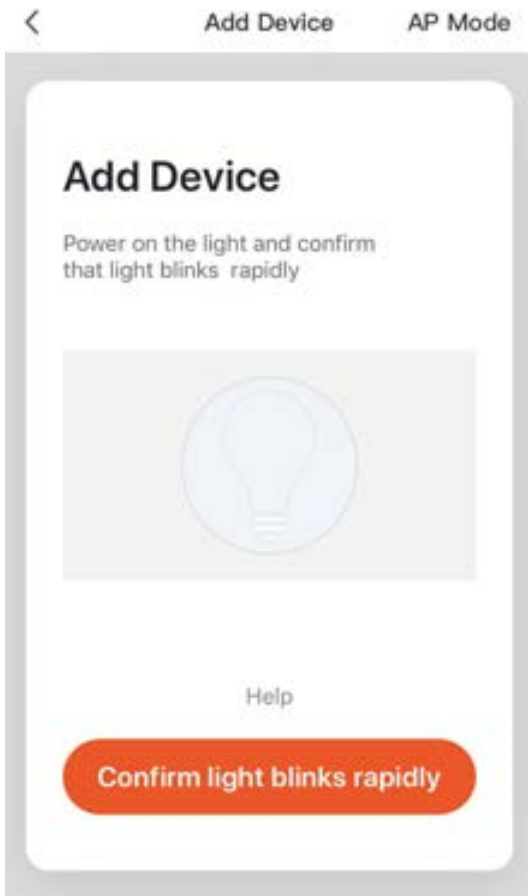
The manager has the highest authorization, and can manage the authorizations for devices and family members.

## 4. Add Device



Click “Add Device” or “+” in the upper right corner of the “My family” page, then click “Smart Lighting” and select the “Lighting Devices” to be chosen.

## ● Add Device -- EZ Mode

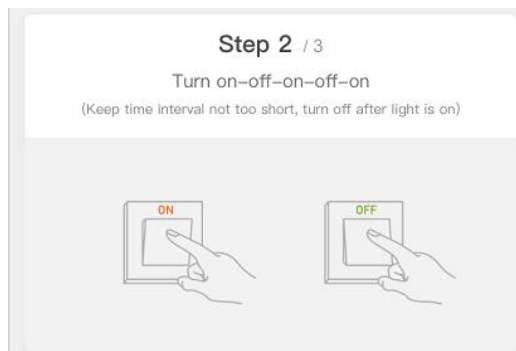


1. The app provides two network configuration modes: EZ Mode and AP Mode. You can click “AP Mode” on the “EZ Mode” page to switch distribution methods.

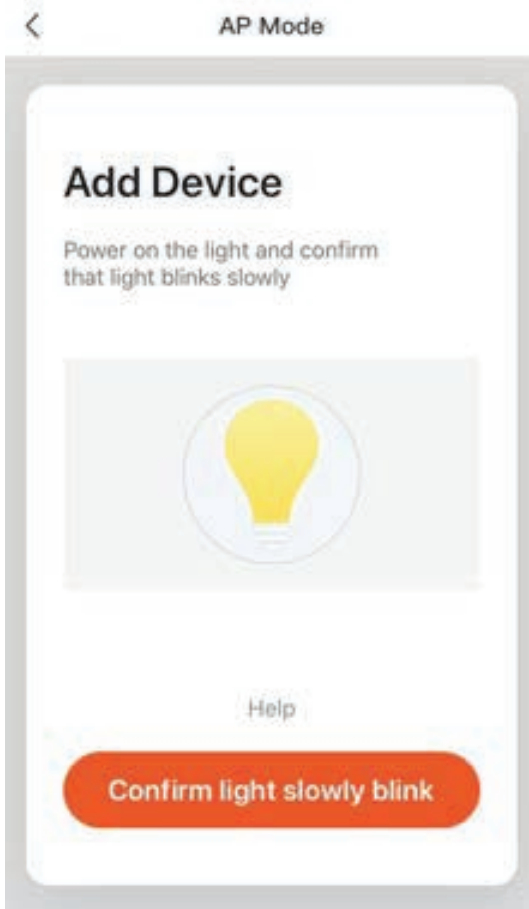
2. If you configure the network in EZ Mode, please confirm that the light blinks rapidly, then click the confirm button to go to the next step.

3. If the indicator is not blinking rapidly, click “Help” to see the procedure.

The light needs to be set to flash rapidly. Please follow the 3 steps below to finish setting.



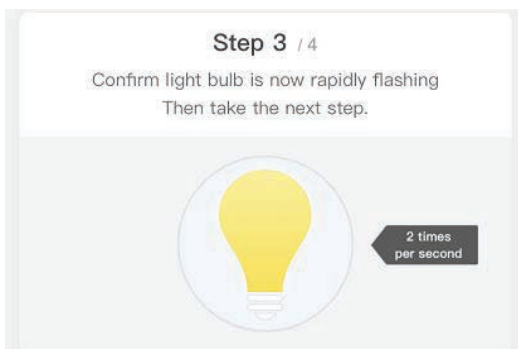
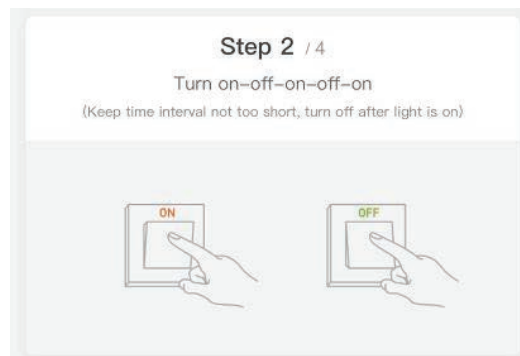
## ● Add Device -- AP Mode



1. If you configure the network in AP Mode, please power on the light and confirm that light blinks slowly then click the confirm button to go to the next step.

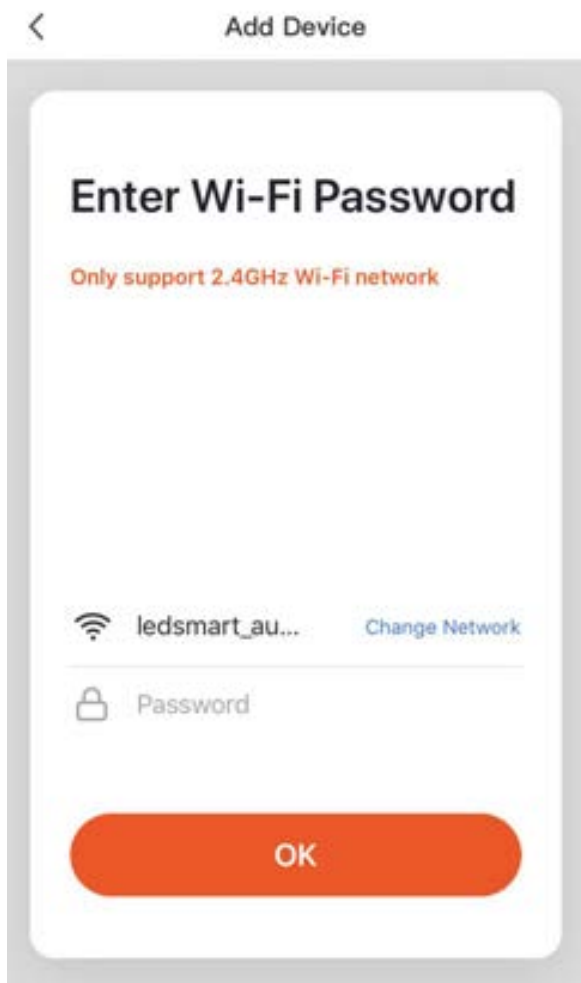
2. If the device indicator is not blinking slowly, click “Help” to see the procedure.

The light needs to be set to flash slowly. Please follow the 4 steps below to finish setting.



---

- Add Device -- Enter WIFI Password



1. Under the specified network configuration mode, click the “Confirm” button once the indicator light is blinking quickly or slowly, and the page as shown in Figure 1 will be displayed.

2. Select a Wifi with connectivity in the device’s working area and enter the Wifi password, then click “Confirm” to begin the network configuration process.

---

- **Add Device -- Network Configuration Process**

If the EZ Mode is selected, the app will go through the network configuration process as shown in Figure 1, and the screen shown in Figure 2 will be displayed once the network configuration is successful. After the network configuration of the device is successful, the user can change the device name and select its location in your house.

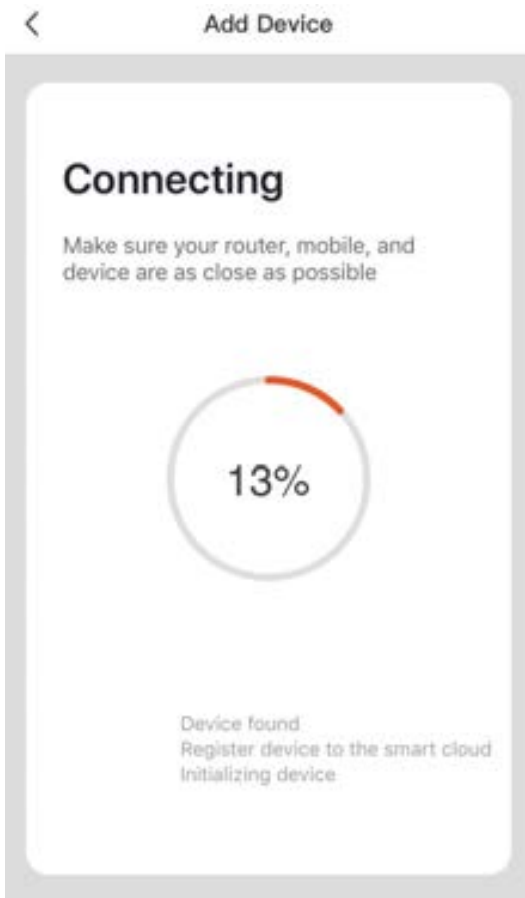


Figure 1

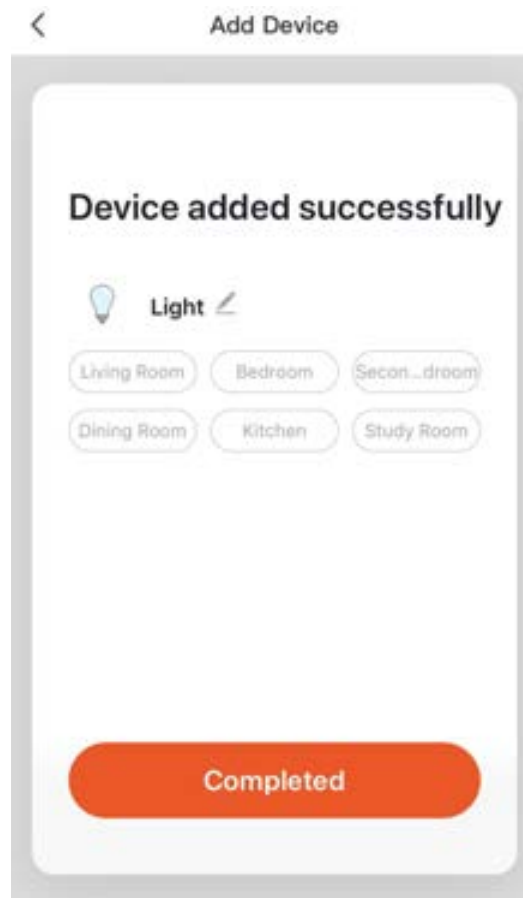


Figure 2

---

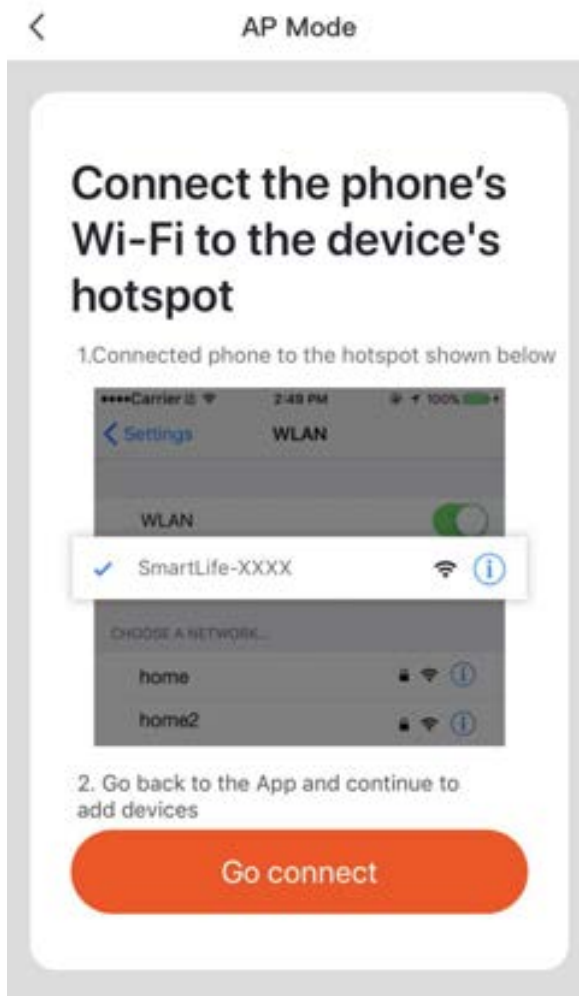


Figure 1

If the AP Mode (blink slowly) is adopted for network configuration, the user can also select the hotspot mode. Connect the device to the Wifi hotspot starting with "SmartLife", as shown in Figure 1.

Note: Some device hotspot names may not start with "SmartLife".

Once the device is connected to the specified hotspot, return to the network configuration screen to begin the network configuration process. The app will go through the network configuration process as shown in Figure 1.

The screen shown in Figure 2 will be displayed once the network configuration is successful.

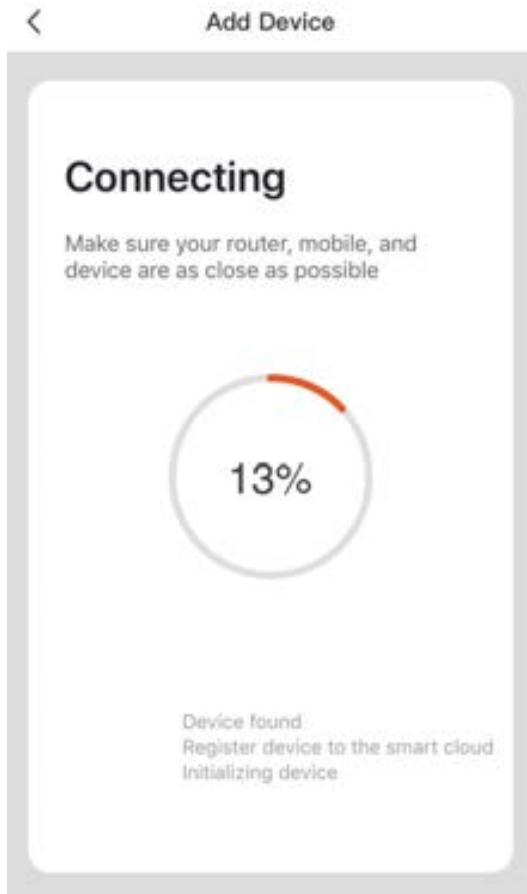


Figure 1

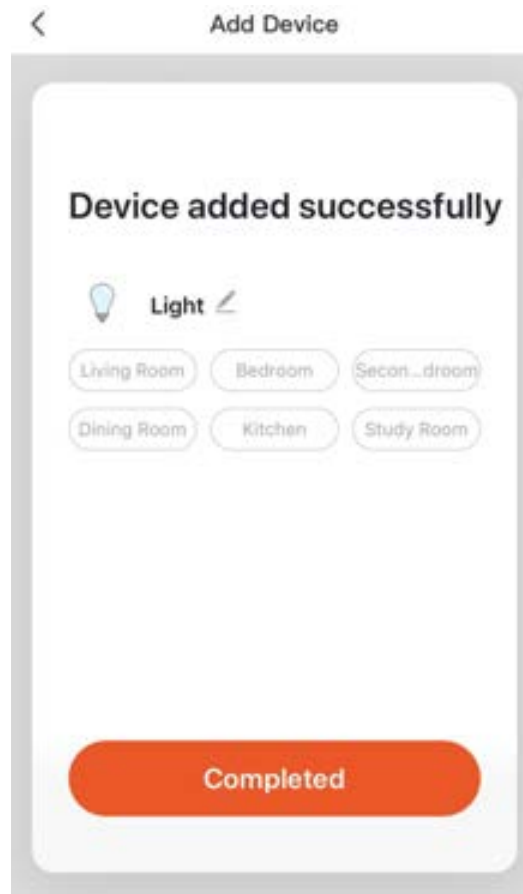
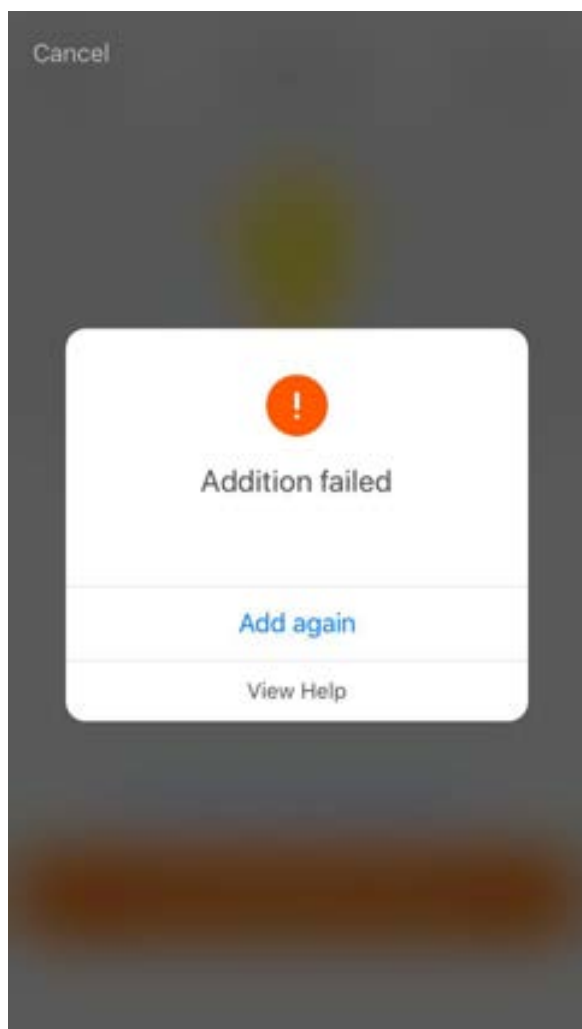


Figure 2



- **Add Device -- Addition failed**



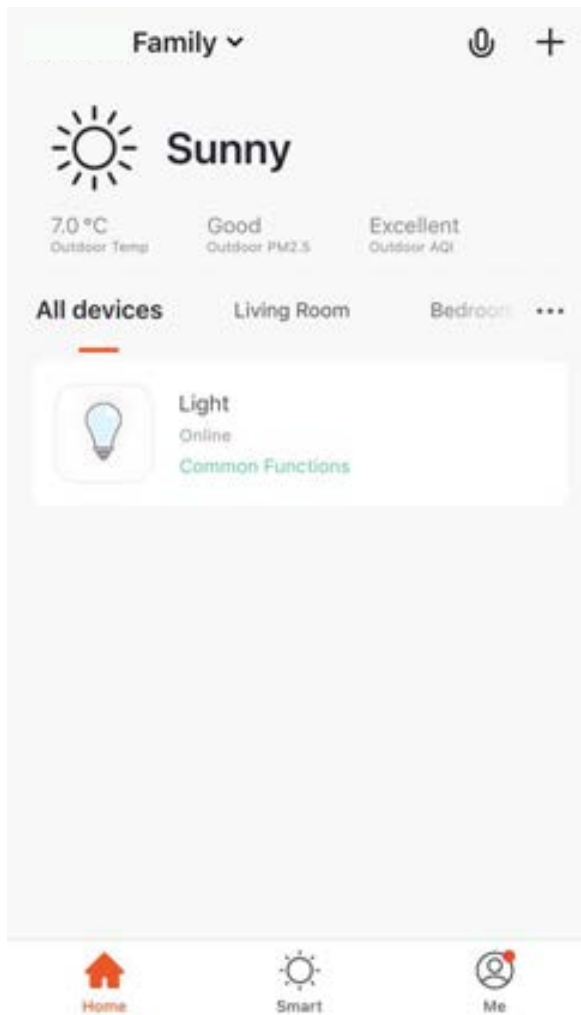
If the network configuration fails, the page shown below will be displayed.

The user can click “Add again” or “View Help”.

---

## 5. Device Control

- Device Control -- Single Device Control



After network configuration, the names of the smart devices will be displayed on My family page. Click the device's name to display the control panel of smart device.

### Remarks:

1. When the device is online, the shortcut key operation is supported. The user can click "Frequently used functions" to use the shortcut key operation.
2. When the device is offline, "Offline" will be displayed, and it will not be operable.

On the device control panel, Figure 1 shows the example of a light in the switched-off state where the “Schedule” only can be set, and Figure 2 shows it in the switched-on state where “scene, color, brightness and schedule can be set. You can enable single device management by clicking the “...” in the upper right corner of the controls page.

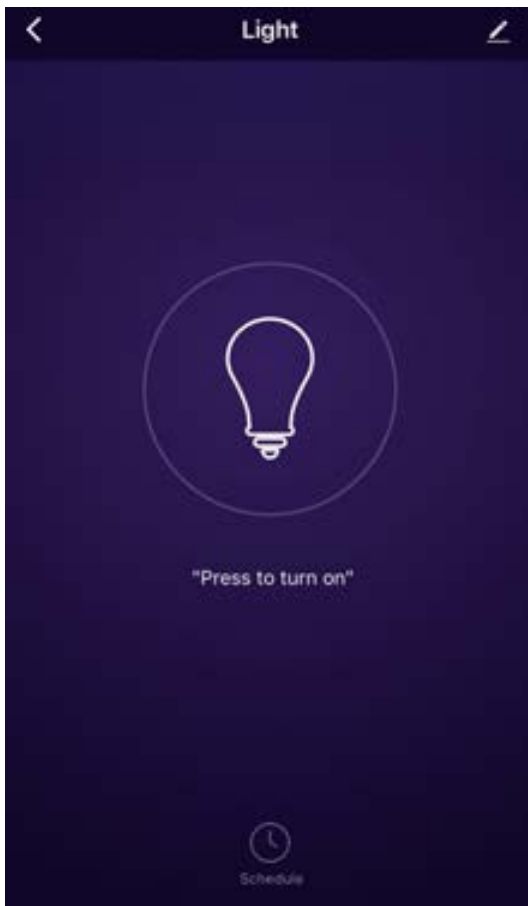
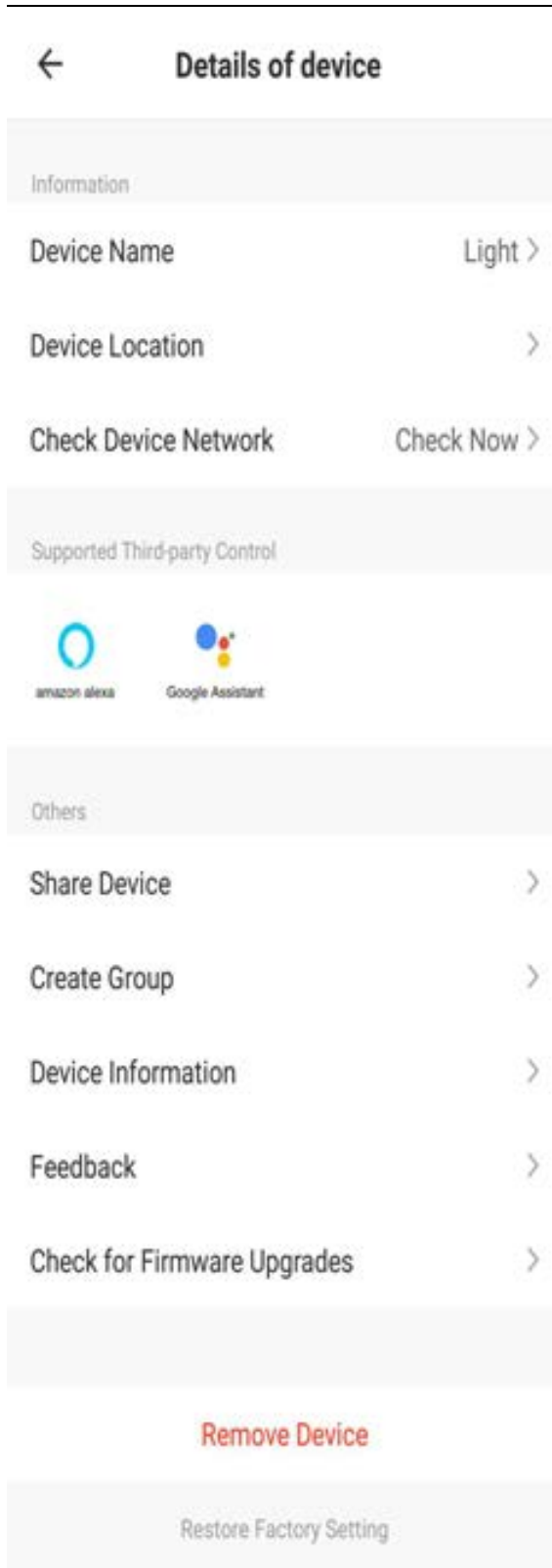


Figure 1



Figure 2



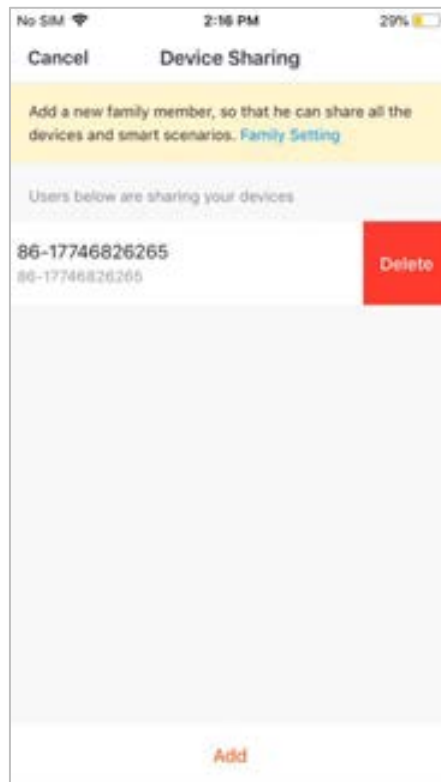
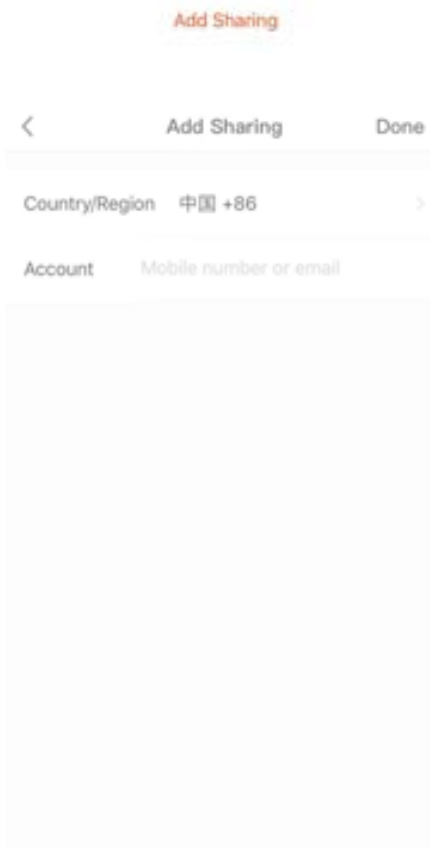
The device modification screen is shown below:

1. Modify basic information: change device name and position.
2. Device Sharing: share the device with other family members by entering the mobile phone number of the member. (Note: the member must have a Tuya app account).
3. Device information: here the user can check device IDs, Wifi signal strength, IP addresses, Mac addresses and time zones of devices.
4. Create Group: click the group creation page, and devices that have been added and have the same model number will be displayed. The group cannot be created if model number is different.
5. Feedback: if the user comes across problems with using devices, he/she can submit questions here.
6. Check for Firmware Upgrade: check information for firmware upgrades.
7. Remove Device: delete added devices from the device list.
8. Reset: all devices will be deleted from the device list and all related data will be cleared.

## ● Device Control -- Device Share



Click “Add Sharing” and enter the account of a member with whom to share the device, then click “Completed”. If you do not want to continue sharing, Android users can long press to delete, IOS users can slide left to delete.



## ● Device Control -- Group Control

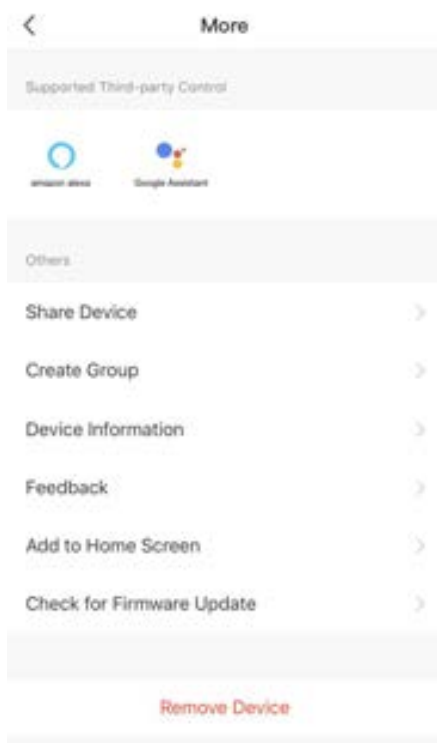


Figure 1

1. Click “Create Group” on the “More” page of a single device, as shown in Figure 1.

2. Devices with the same model for which a group can be created will be displayed. Select the devices and click “Save”, then click “Confirm” as shown in Figure 2.

3. After a group is successfully created, it will automatically be displayed in the group control panel shown in Figure 3, and the devices can be controlled as a group.

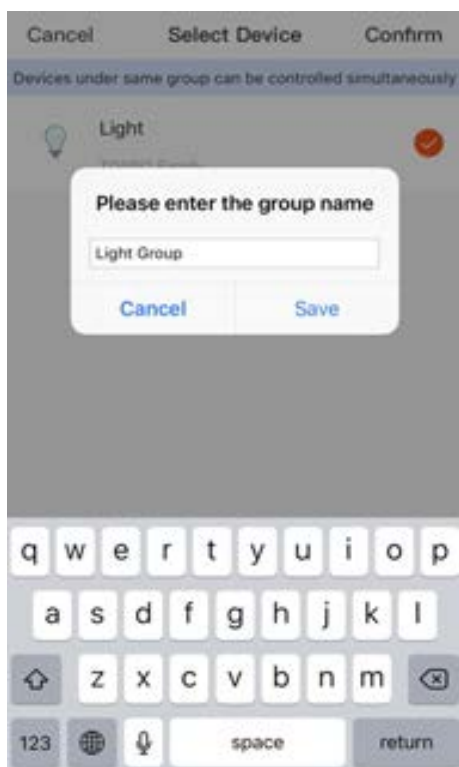


Figure 2

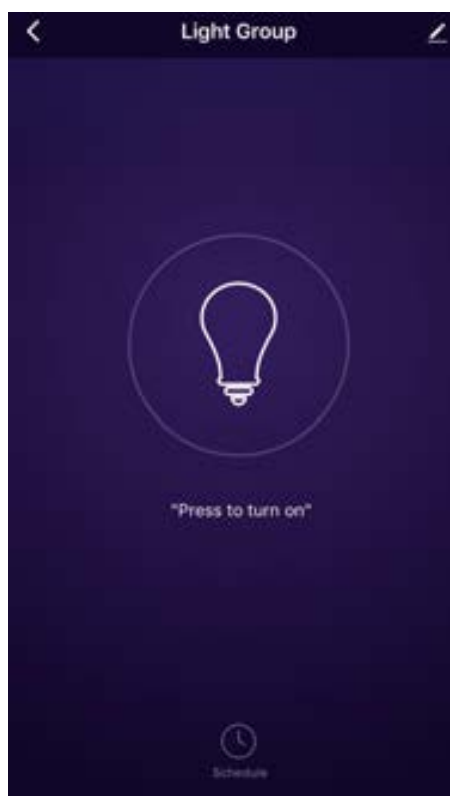


Figure 3

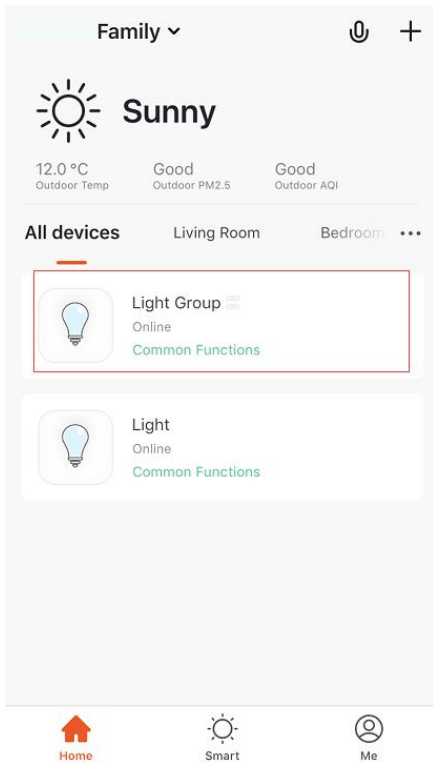


Figure 1



Figure 2

1. After a group is successfully created, it can be seen on the “My family” page and controlled with shortcut keys.

2. Open the group controls page as shown in Figure 2.

3. Click the “...” in the upper right corner of the page to manage group devices, as shown in Figure 3.

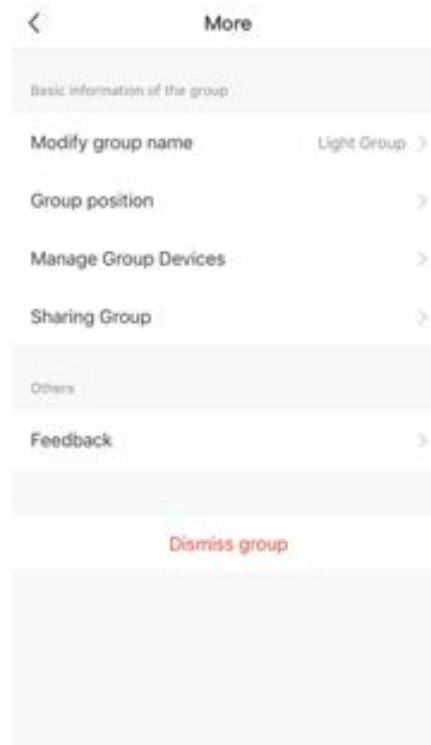


Figure 3

## 6. Smart-Automatic

- Smart-Automatic

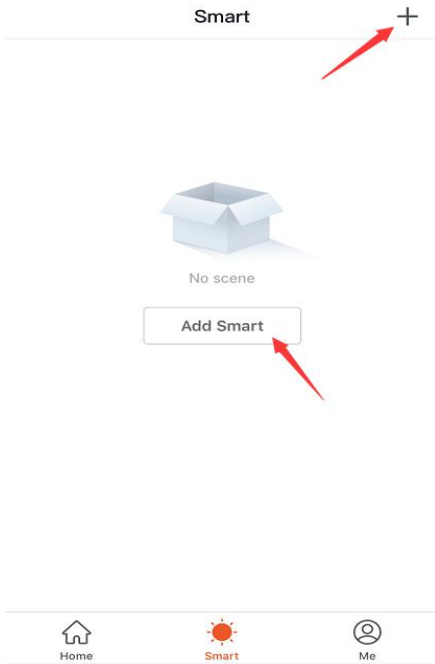


Figure 1

On the “Smart” page, click the “Add Smart” or the “+” in the upper right corner and select “Automatic”, and the smart settings page will be displayed, as shown in Figure 3.

By clicking the “+” in Figure 3, you can add multiple triggering conditions and execution actions.

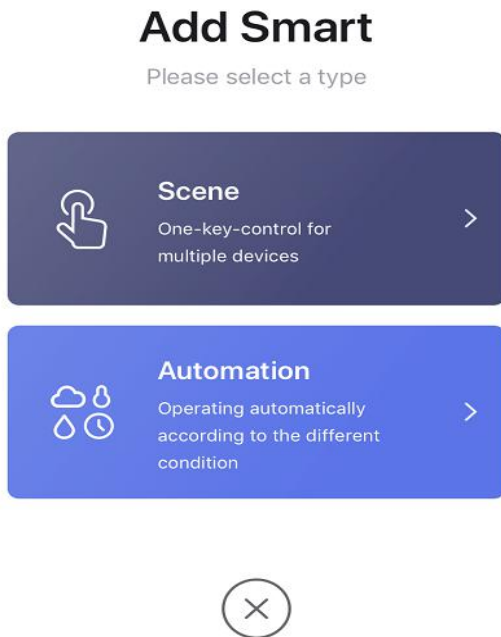


Figure 2

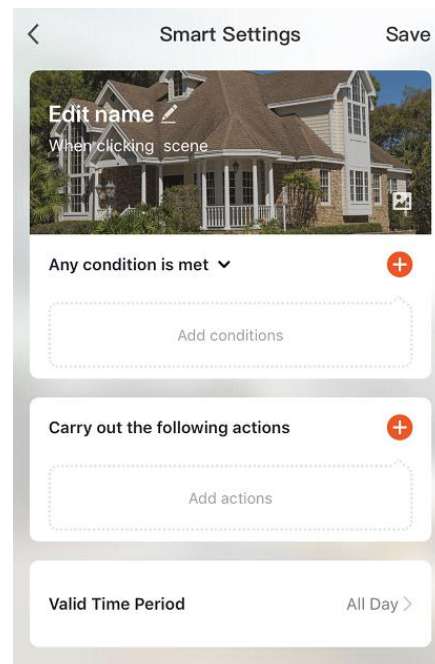


Figure 3



- **Smart-Scene**

## Add Smart

Please select a type

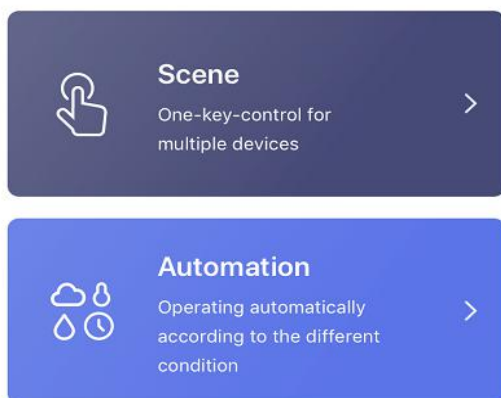


Figure 1

Select “Scene” in Figure 1 to enter the Smarting Setting page. As shown in Figure 2, the user should enter scene name. Click “Add Execution Action” or the “+” in the upper right corner to add actions. The action selection page is shown in Figure 3, the setting method is the same as for setting automation.

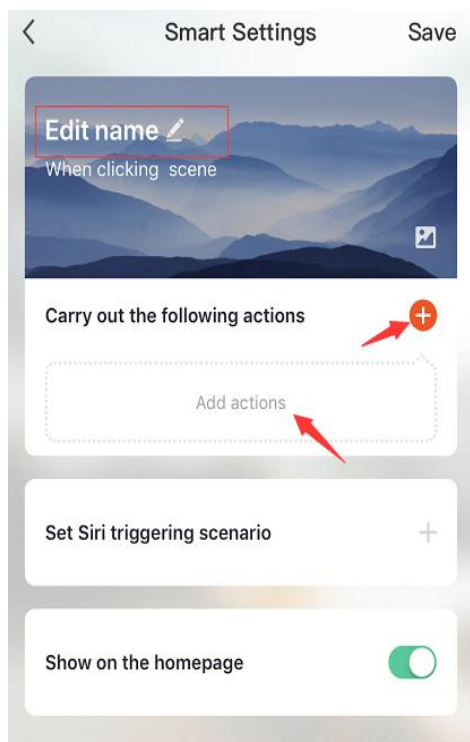


Figure 2

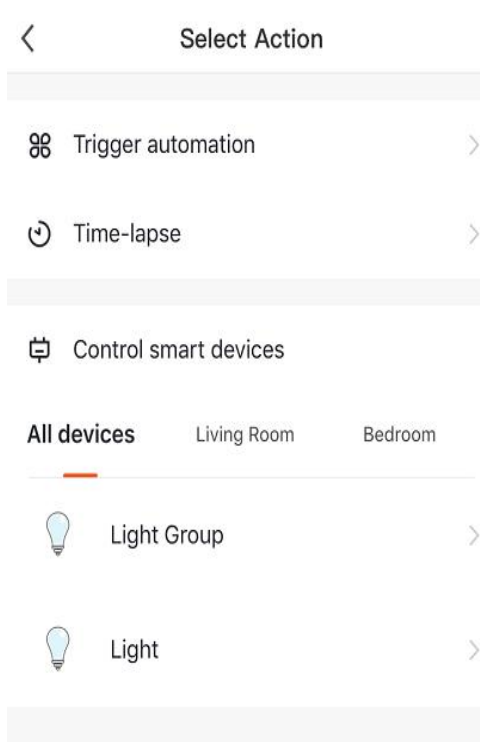


Figure 3

- **Smart-Add/change/delete**

The automation and scene settings will be displayed on the “Smart” page. The user can change the added scenario or automation actions by clicking “Edit” in the upper left corner of the page. For example: if the user clicks “Update Scene”, the page in Figure 2 will be displayed, on which the user can change the order of scenes. Click the red "-" on the left to delete the scene. (Android can be left-slid to delete)

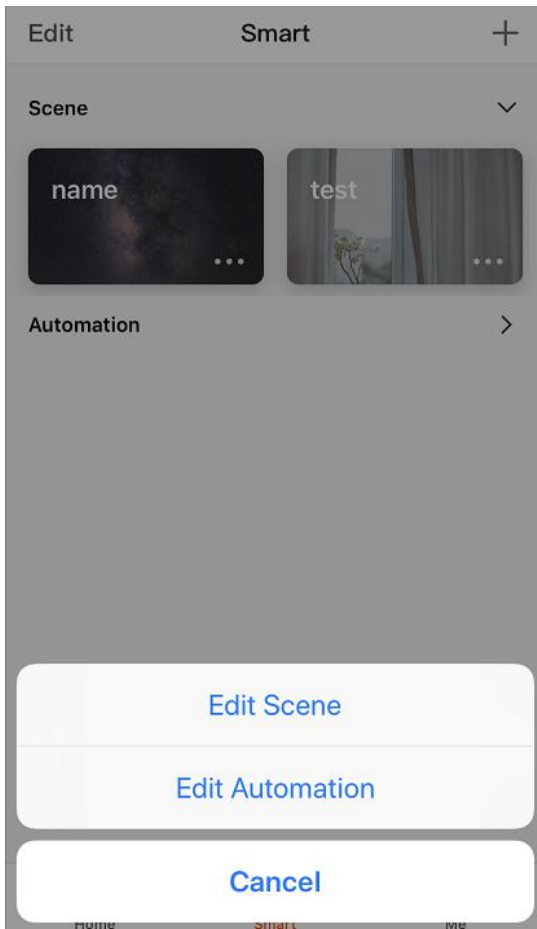


Figure 1

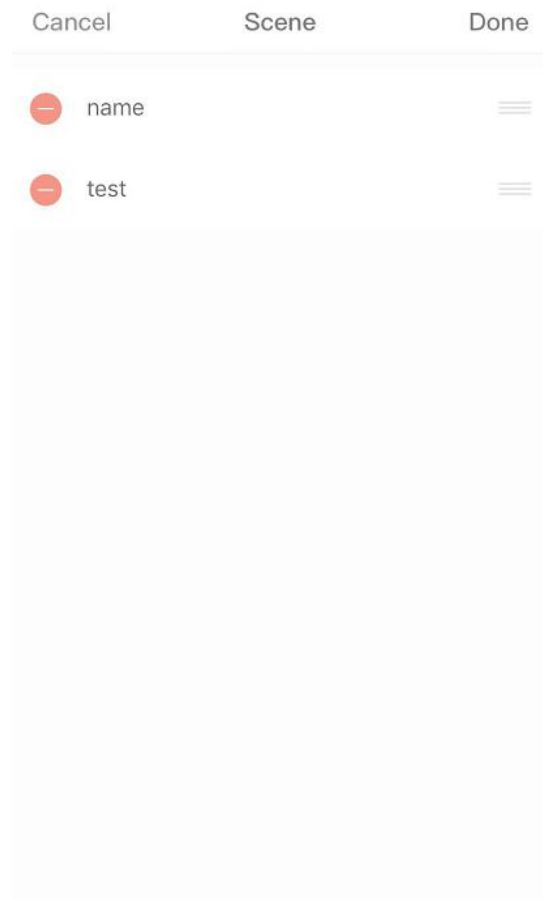


Figure 2

Edit content of scene: click the “...” shown in Figure 1 to display the edit page.

Edit automated content: Click on the automated background image in Figure 1 to enter the edit page. On the editing page as shown in Figure 2, you can slide the screen to the left to delete added conditions and actions, add new ones and “Delete Smart”.

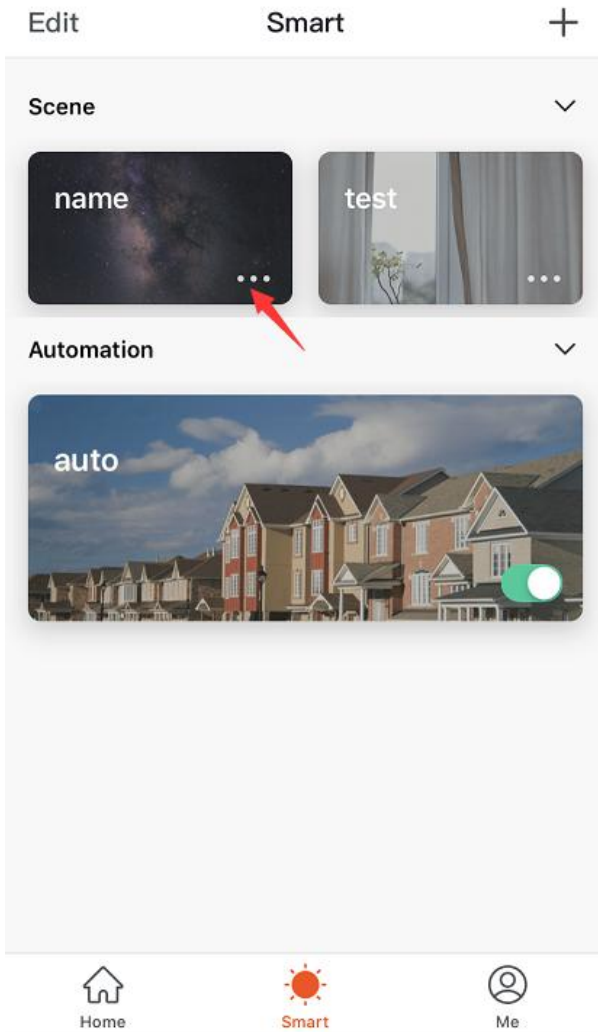


Figure 1

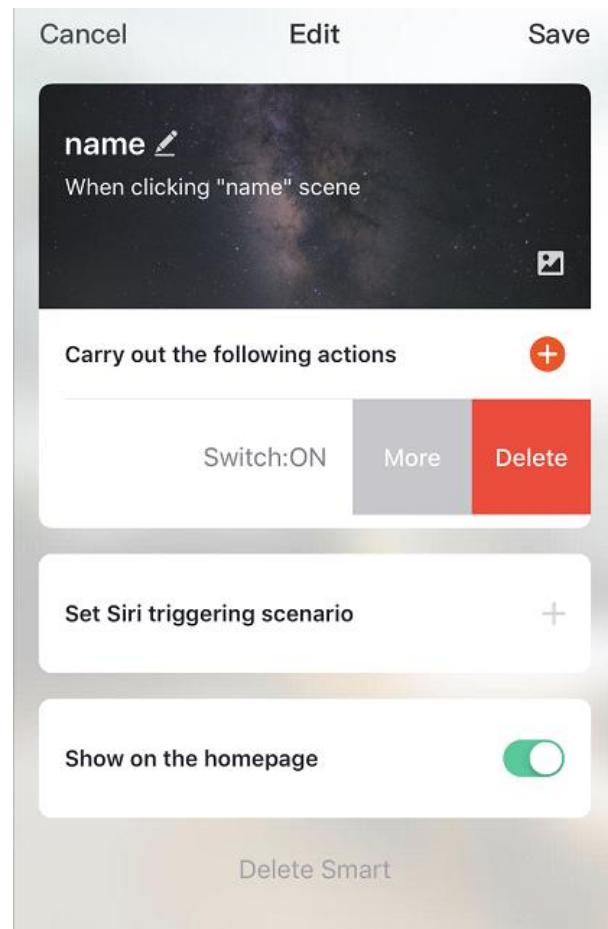
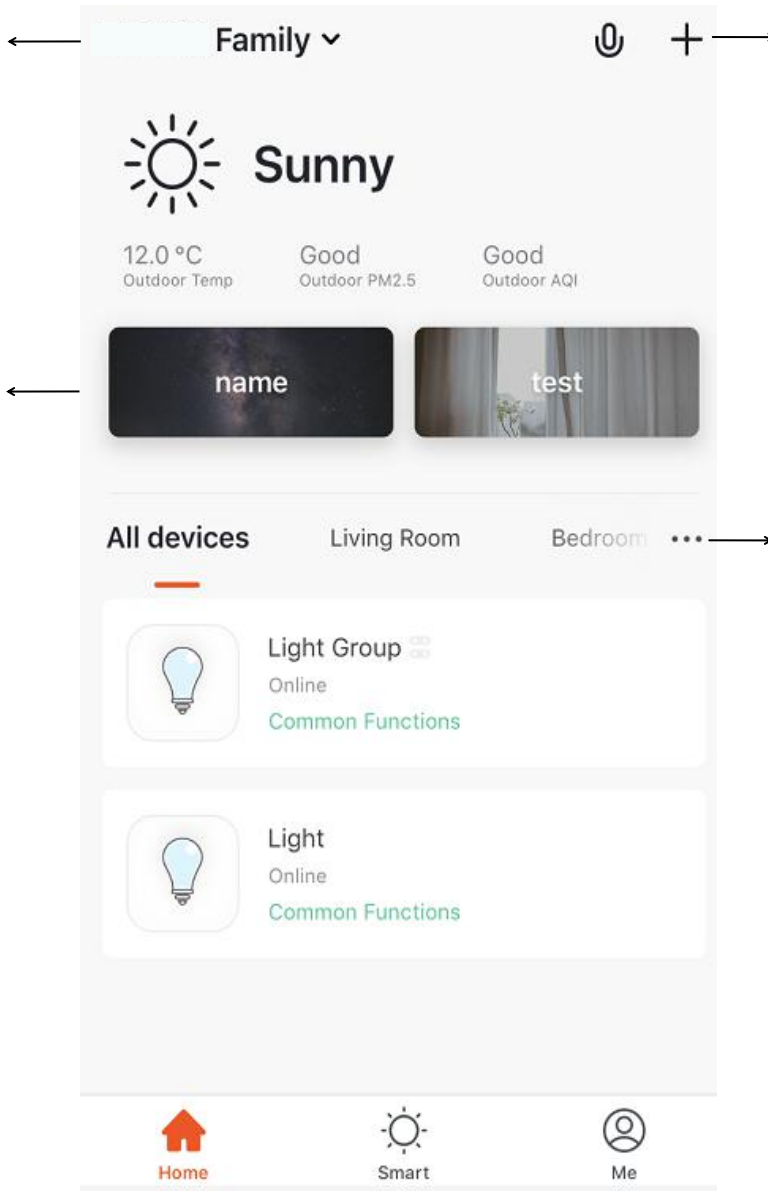


Figure 2

## 7. My Family

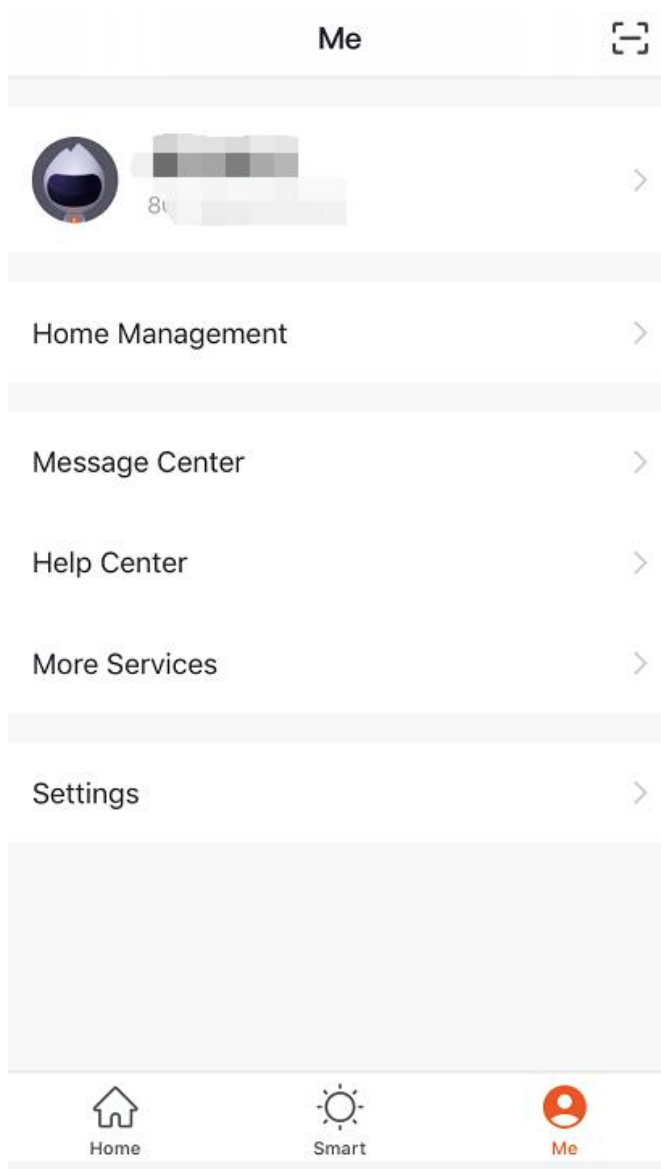
Allow users from multiple families switch or add families



Start smart scene with one key  
Switch scene flexibly within each home

Switch rooms within each home;  
Check the status of smart devices in each room

## 8. Profile Page

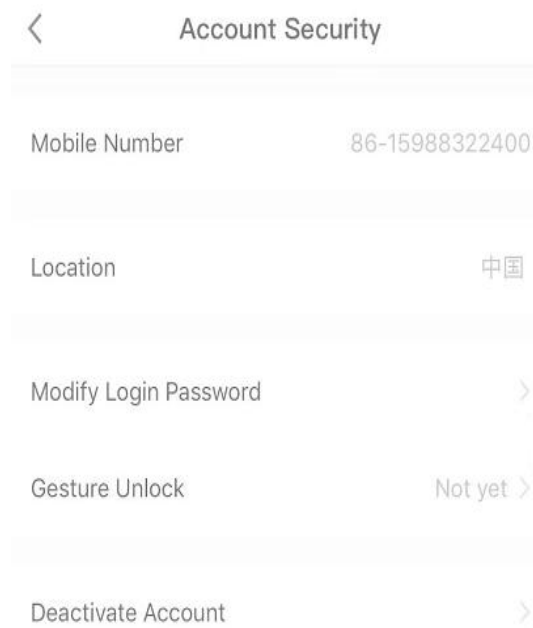
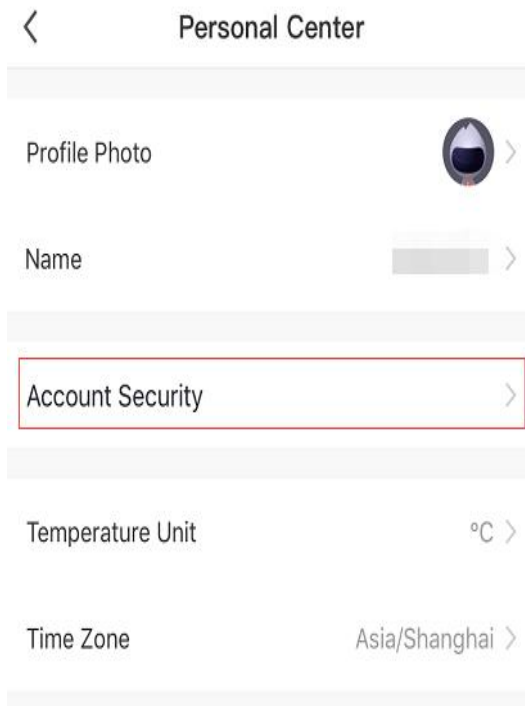


The personal center is the access for users to manage information. The following main information is displayed:

1. Home management
2. Message center: feedback processing results, new device sharing messages, devices with notification functions, etc.
3. Help Center:FAQs.

## 9. Personal Center

The personal information page is used to display personal account information. The user can change the login password, sync mobile phone numbers and set unlock with gestures here.



By clicking “Gesture Unlock ”, the user can conveniently set a pattern lock. Once the pattern lock is engaged, the user must enter the pattern lock to use the app.

